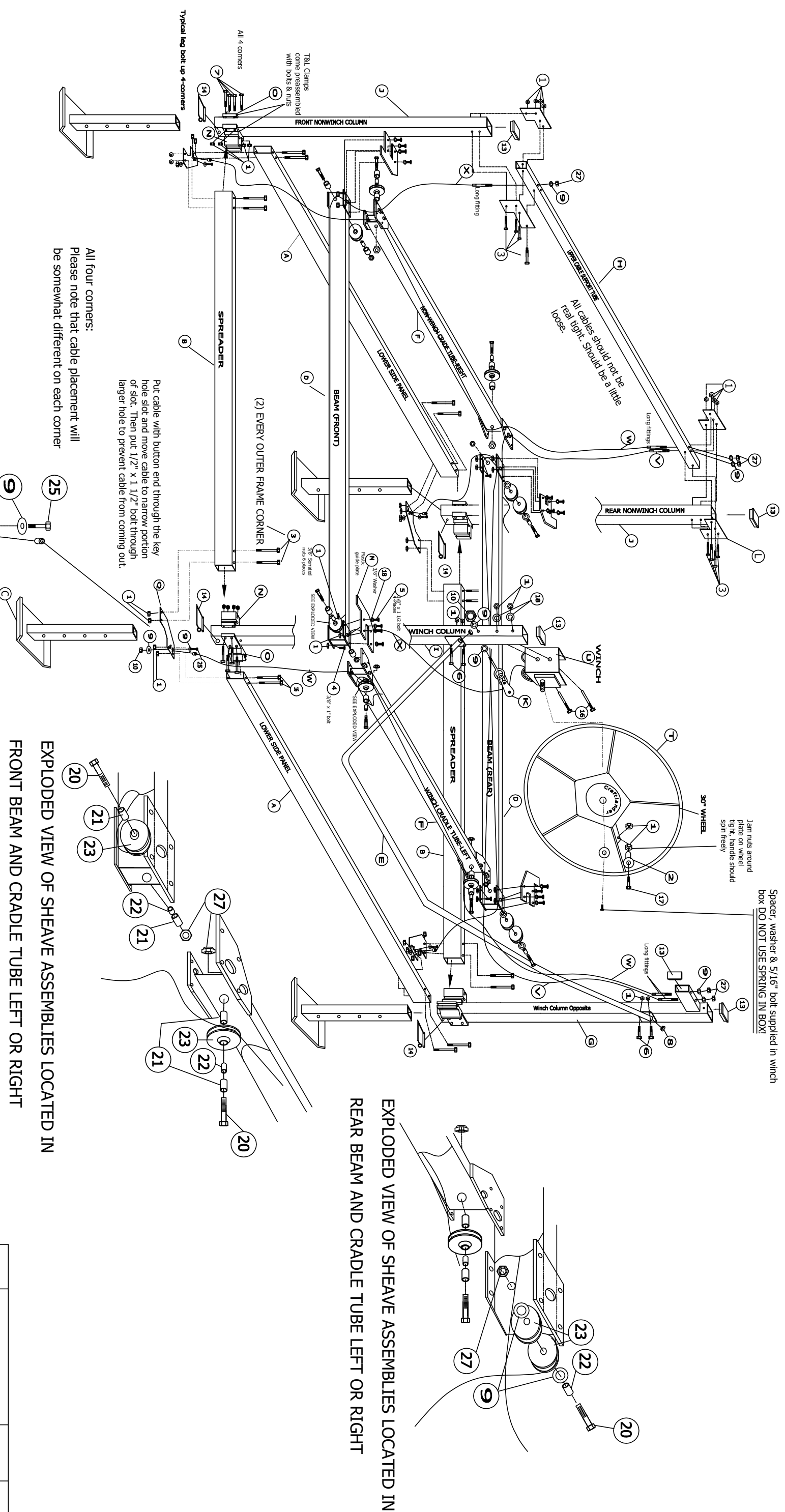


Note bolt thread area should be on outside of hoist

If this print has colored cables they are for easier understanding of how they are strung. Cables from the factory are colored too. They won't all match to below colors.

Spacer, washer & 5/16" bolt supplied in winch box **DO NOT USE SPRING IN BOX!**



All cables should not be real tight. Should be a little loose.

All four corners: Please note that cable placement will be somewhat different on each corner.

Put cable with button end through the key hole slot and move cable to narrow portion of slot. Then put 1/2" x 1 1/2" bolt through larger hole to prevent cable from coming out.

Jam nuts around plate on wheel tight, handle should spin freely

EXPLODED VIEW OF SHEAVE ASSEMBLIES LOCATED IN REAR BEAM AND CRADLE TUBE LEFT OR RIGHT

EXPLODED VIEW OF SHEAVE ASSEMBLIES LOCATED IN FRONT BEAM AND CRADLE TUBE LEFT OR RIGHT

REV	DESCRIPTION	DATE	INT

NuCraft
 402 SOUTHLINE RD.
 ROSCOMMON, MI 48653
CRAFTLANDER
 Title: MH-10PWC VERTICAL HOIST-2013 SERIES
 DRAWING NO. SCALE DATE 1/17/13
 A-MH-10PWC-13 NONE DRAWN BY FS