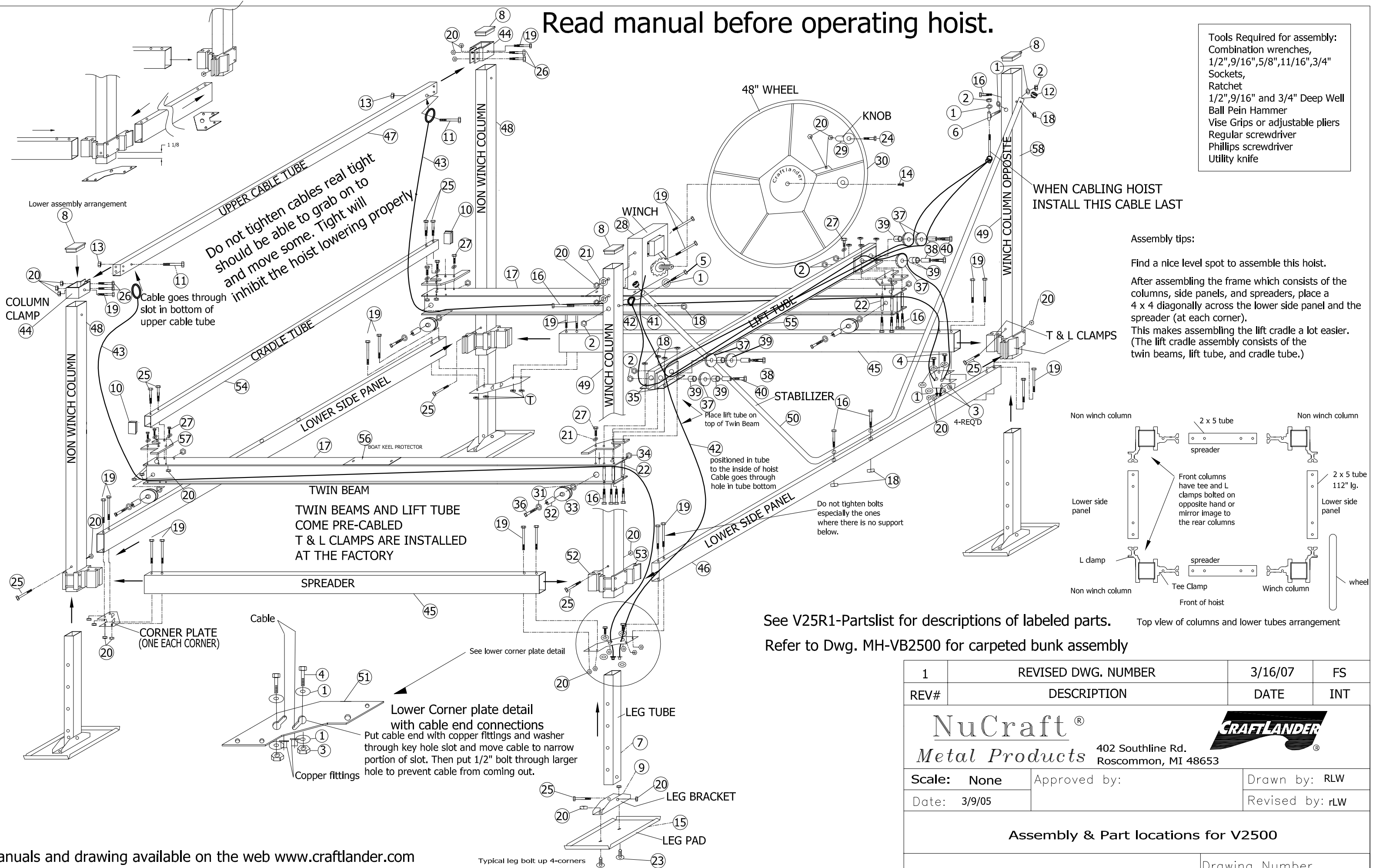


# Read manual before operating hoist.

Tools Required for assembly:  
 Combination wrenches,  
 1/2", 9/16", 5/8", 11/16", 3/4"  
 Sockets,  
 Ratchet  
 1/2", 9/16" and 3/4" Deep Well  
 Ball Pein Hammer  
 Vise Grips or adjustable pliers  
 Regular screwdriver  
 Phillips screwdriver  
 Utility knife



See V25R1-Partslist for descriptions of labeled parts.

Refer to Dwg. MH-VB2500 for carpeted bunk assembly

|  |                     |  |                                |
|--|---------------------|--|--------------------------------|
| 1  | REVISED DWG. NUMBER | 3/16/07                                  | FS                             |
| REV#   | DESCRIPTION         | DATE                                     | INT                            |
|  |                     |  |                                |
| NuCraft <sup>®</sup><br>Metal Products         |                     | 402 Southline Rd.<br>Roscommon, MI 48653 |                                |
| Scale: None                                    | Approved by:        | Drawn by: RLW                            |                                |
| Date: 3/9/05                                   |                     | Revised by: rLW                          |                                |
| <b>Assembly &amp; Part locations for V2500</b> |                     |  |                                |
|  |                     |  | Drawing Number<br><b>V25R1</b> |